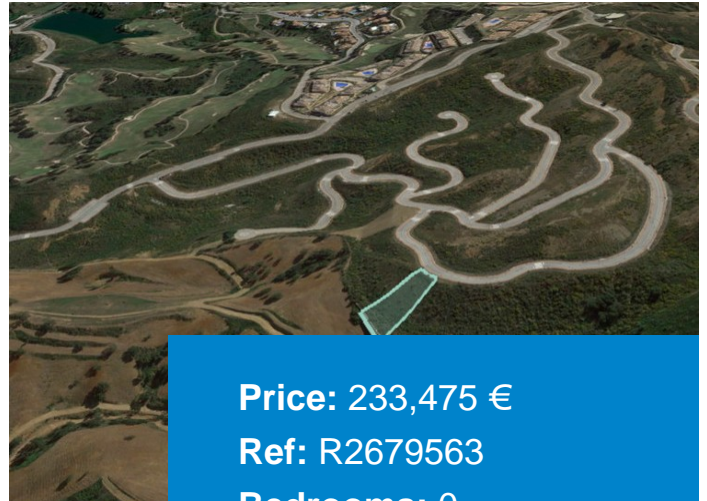
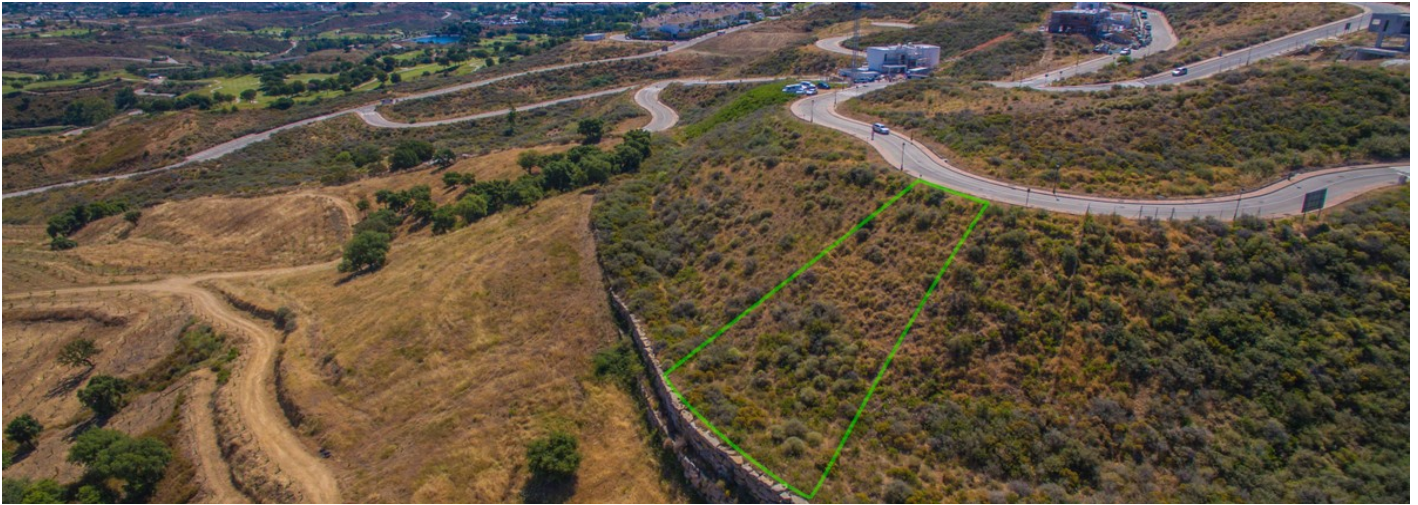


+ 34 951 69 00 74 + 36 620 249 227
INFO@BAHIAESTATES.COM



RESIDENTIAL PLOT FOR SALE IN LA CALA GOLF

Price: 233,475 €
Ref: R2679563
Bedrooms: 0
Bathrooms: 0
Built size: 0 m²
Plot/Garden: 1415 m²
Terrace: 0 m²

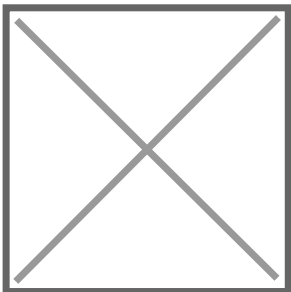
Sector11, Plot15
Residential Plot, La Cala Golf, Costa del Sol.
Garden/Plot 1415m².
buildable: 283m²

Setting : Country, Mountain Pueblo, Close To Golf, Close To Schools, Close To Forest.
Orientation : East, South East, South.
Pool : Room For Pool.
Views : Sea, Mountain, Golf, Panoramic.
Utilities : Electricity, Drinkable Water.

Category : Off Plan.

Precio no incluye gastos ni tributos. Gastos adicionales por parte del comprador: Impuesto Sobre Transmisiones (8% hasta 400.000€, 9% de 400.000 a 700.000€ y 10% a partir de 700.000€), Actos Jurídicos Documentados 1,5% sobre el precio de compra, gastos de registro y notaría. Ficha informativa a su disposición en nuestra oficina según Decreto 218/2005 de 11/Oct.

Sale price does not include costs or taxes. Additional costs for the buyer: inscription and notary fees, ITP (8% up to 400.000 euros, 9% from 400.000 to 700.000 euros and 10% from 700,000 euros) or, alternatively 10% VAT and AJD (1.5% on the purchase price) on new properties and subject to some requites to be met. This info is subject to errors, omissions, modifications, prior sale or withdrawal from the marke. Information sheet available, Decree 218/2005 Oct. 11th



+ 34 951 69 00 74 + 36 620 249 227
INFO@BAHIAESTATES.COM



Precio no incluye gastos ni tributos. Gastos adicionales por parte del comprador: Impuesto Sobre Transmisiones (8% hasta 400.000€, 9% de 400.000 a 700.000€ y 10% a partir de 700.000€), Actos Jurídicos Documentados 1,5% sobre el precio de compra, gastos de registro y notaría. Ficha informativa a su disposición en nuestra oficina según Decreto 218/2005 de 11/Oct.

Sale price does not include costs or taxes. Additional costs for the buyer: inscription and notary fees, ITP (8% up to 400.000 euros, 9% from 400.000 to 700.000 euros and 10% from 700.000 euros) or, alternatively 10% VAT and AJD (1.5% on the purchase price) on new properties and subject to some requites to be met. This info is subject to errors, omissions, modifications, prior sale or withdrawal from the marke. Information sheet available, Decree 218/2005 Oct. 11th