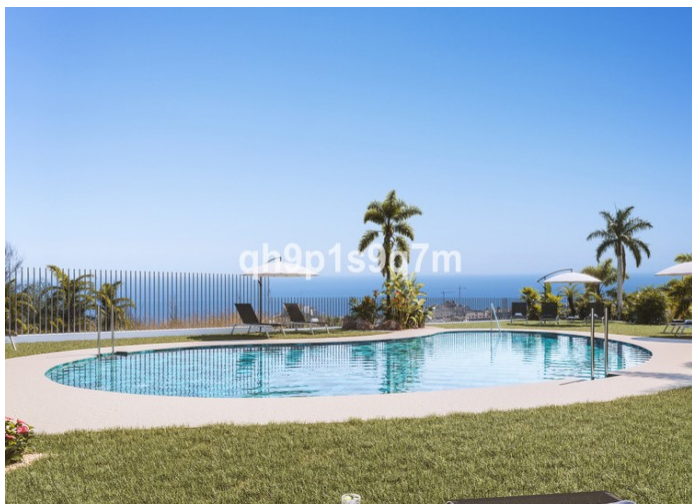




+ 34 951 69 00 74 + 36 620 249 227
INFO@BAHIAESTATES.COM



GROUND FLOOR APARTMENT FOR SALE IN BENALMADENA

Price: 461000 -
750000 €

Ref: R4252741

Bedrooms: 2 - 3

Bathrooms: 2 - 3

Built size: 82 - 100 m²

Plot/Garden: 0 m²

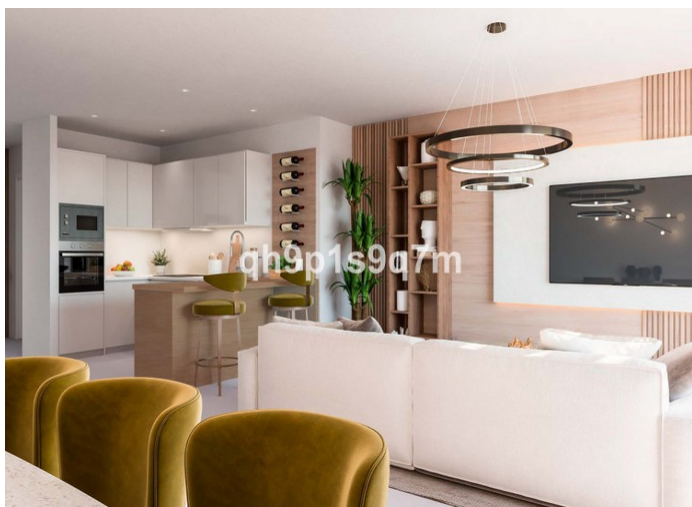
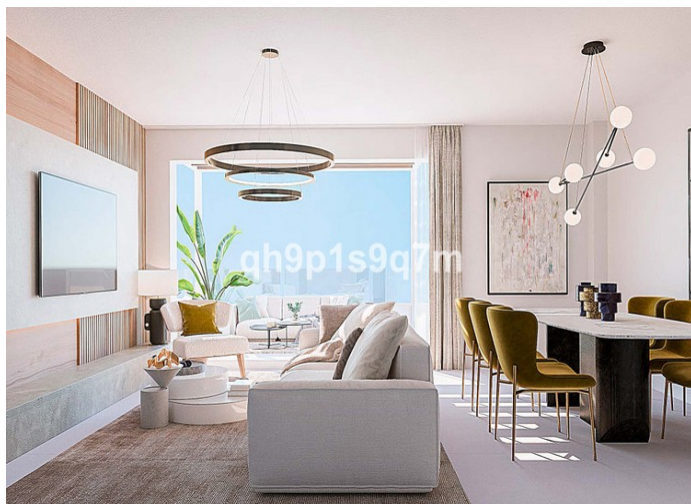
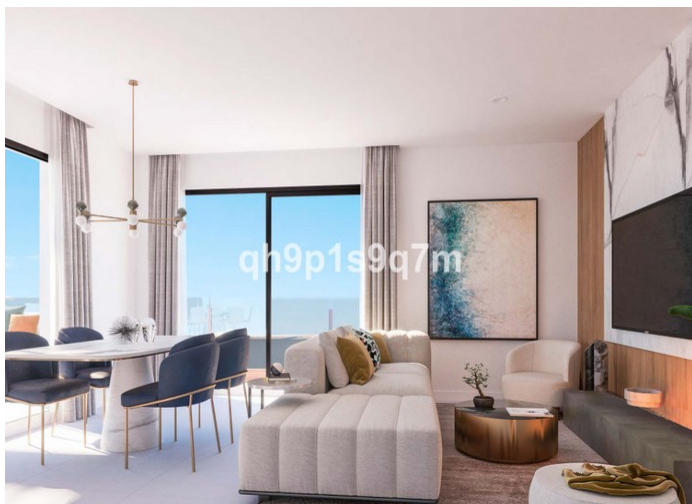
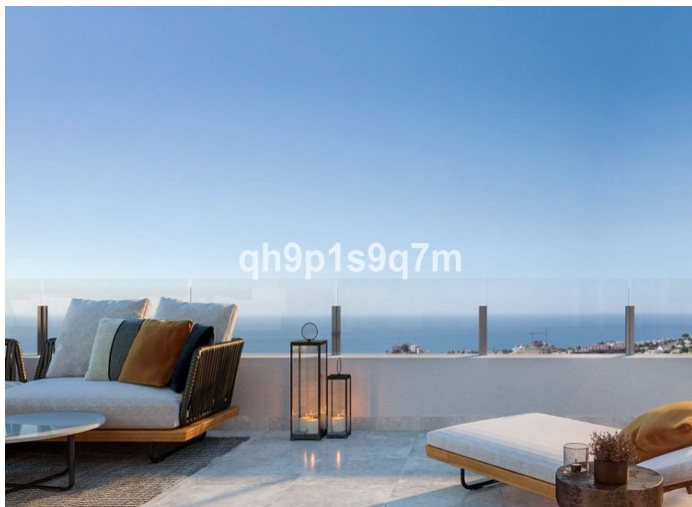
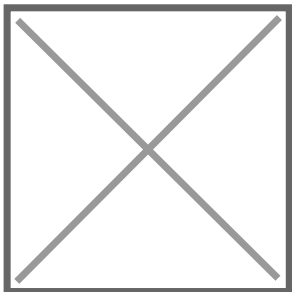
Terrace: 0 - 97 m²

New Development: Prices from €461,000 to €750,000. [Bedrooms: 2 - 3] [Bathrooms: 2 - 3] [Built size: 82m2 - 100m2].

SHOW HOME SOON TO BE AVAILABLE!

~~This residences is an exclusive gated development in Benalmadena. All of the homes have incredible sea views and the staggered layout of the 49 apartments and 2 townhouses allows for natural light to flood into the bright rooms.~~

Sale price does not include costs or taxes. Additional costs for the buyer: inscription and notary fees, ITP (8% up to 400.000 euros, 9% from 400.000 to 700.000 euros and 0% from 700.000 euros) or, alternatively 10% VAT and AJD (1.5% on the purchase price) on new properties and subject to some requites to be met. This info is subject to errors, omissions, modifications, prior sale or withdrawal from the marke. Information sheet available, Decree 218/2005 Oct. 11th



Precio no incluye gastos ni tributos. Gastos adicionales por parte del comprador: Impuesto Sobre Transmisiones (8% hasta 400.000€, 9% de 400.000 a 700.000€ y 10% a partir de 700.000€), Actos Jurídicos Documentados 1,5% sobre el precio de compra, gastos de registro y notaría. Ficha informativa a su disposición en nuestra oficina según Decreto 218/2005 de 11/Oct.

Sale price does not include costs or taxes. Additional costs for the buyer: inscription and notary fees, ITP (8% up to 400.000 euros, 9% from 400.000 to 700.000 euros and 10% from 700.000 euros) or, alternatively 10% VAT and AJD (1.5% on the purchase price) on new properties and subject to some requites to be met. This info is subject to errors, omissions, modifications, prior sale or withdrawal from the marke. Information sheet available, Decree 218/2005 Oct. 11th