

+ 34 951 69 00 74 + 36 620 249 227

INFO@BAHIAESTATES.COM



GROUND FLOOR APARTMENT FOR SALE IN MANILVA

Price: 235,000 €

Ref: R4356013

Bedrooms: 2

Bathrooms: 2

Built size: 88 m²

Plot/Garden: 0 m²

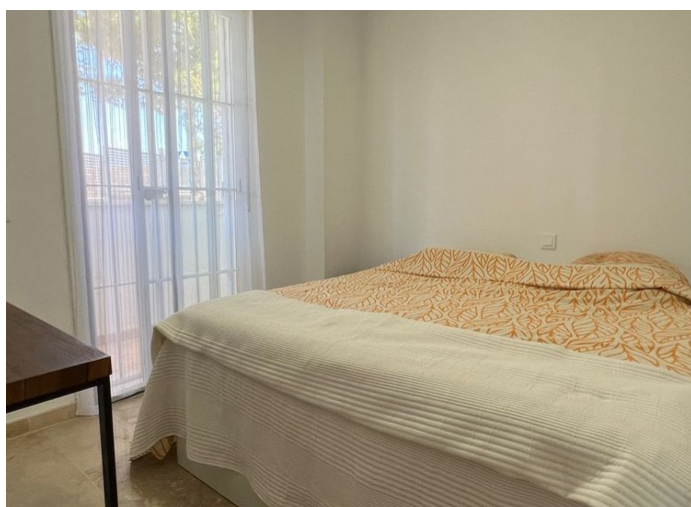
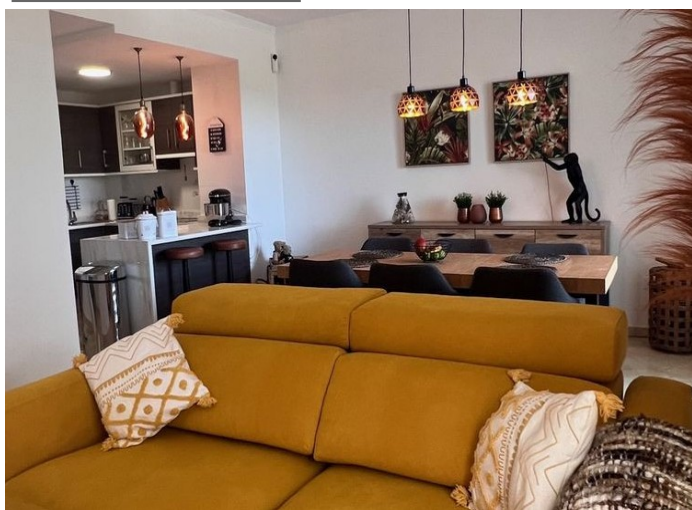
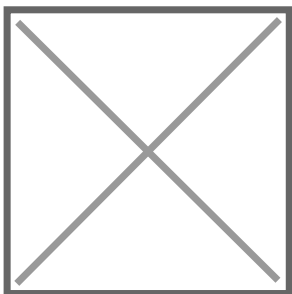
Terrace: 6 m²

This unique flat in the Resort Small Oasis in Manilva has been transformed from a 3 bedroom flat to a 2 bedroom giving it a more spacious living space as well as more storage cupboards. The flat is located on a ground floor with beautiful south-west facing sea views where you can cosy up on the terrace to enjoy all the peace and nature.

It consists of an entrance hall with a storage cupboard, a small bathroom and guest room with access to a small terrace to the side, as well as the master bedroom with the bathroom next to it **has access to this terrace.**

The fully installed kitchen gives an open space feel to a nice dining table and lounge area. All rooms enjoy air conditioning hot and cold.

Sale price does not include costs or taxes. Additional costs for the buyer: inscription and notary fees, ITP (8% up to 400.000 euros, 9% from 400.000 to 700.000 euros and 10% from 700,000 euros) or, alternatively 10% VAT and AJD (1.5% on the purchase price) on new properties and subject to some requires to be met. This info is subject to errors, omissions, modifications, prior sale or withdrawal from the marke. Information sheet available, Decree 218/2005 Oct. 11th



Precio no incluye gastos ni tributos. Gastos adicionales por parte del comprador: Impuesto Sobre Transmisiones (8% hasta 400.000€, 9% de 400.000 a 700.000€ y 10% a partir de 700.000€), Actos Jurídicos Documentados 1,5% sobre el precio de compra, gastos de registro y notaría. Ficha informativa a su disposición en nuestra oficina según Decreto 218/2005 de 11/Oct.

Sale price does not include costs or taxes. Additional costs for the buyer: inscription and notary fees, ITP (8% up to 400.000 euros, 9% from 400.000 to 700.000 euros and 10% from 700.000 euros) or, alternatively 10% VAT and AJD (1.5% on the purchase price) on new properties and subject to some requites to be met. This info is subject to errors, omissions, modifications, prior sale or withdrawal from the marke. Information sheet available, Decree 218/2005 Oct. 11th