



**Price:** 325,000 €  
**Ref:** R4408759  
**Bedrooms:** 3  
**Bathrooms:** 3  
**Built size:** 88 m<sup>2</sup>  
**Plot/Garden:** 0 m<sup>2</sup>  
**Terrace:** 30 m<sup>2</sup>

# MIDDLE FLOOR APARTMENT FOR SALE IN BENALMADENA

Apartment located a few minutes walking from the sea, and close to supermarket, restaurants and schools.

Comprising of 3 bedrooms, 1 complete bathroom, 1 toilet, large well equipped kitchen with recently purchased appliances, entrance hall, spacious lounge and good sized south-west facing terrace.

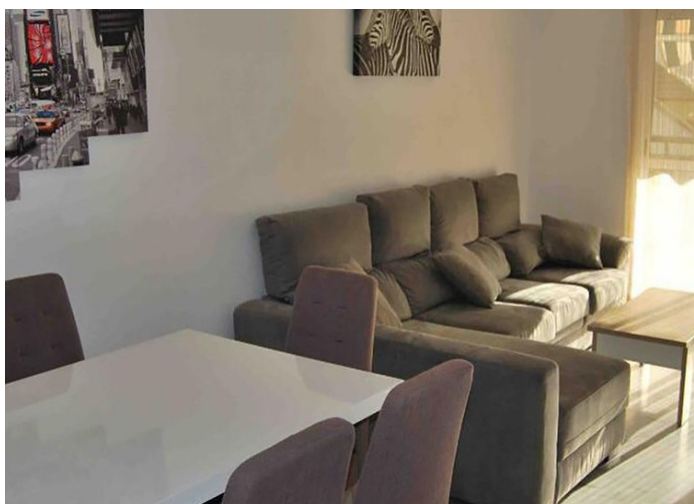
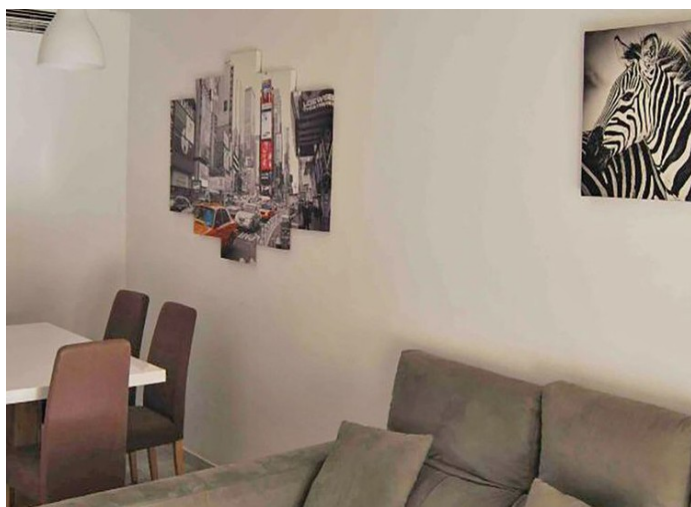
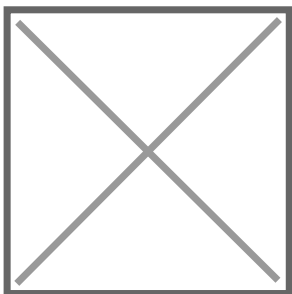
Includes a parking space in the communal garage.

The community has a good communal swimming pool and children's playground!

Ideal as a family or holiday home.

Precio no incluye gastos mínimos. Incluye: adicionales de pago de comunidad. Incluye: Imp. de Transm. Inmuebles (8% hasta 400.000€, 9% de 400.000 a 700.000€ y 10% a partir de 700.000€), Actos Jurídicos Documentados 1,5% sobre el precio de compra, gastos de registro y notaría. Ficha informativa a su disposición en nuestra oficina según artículo 220 de la Ley de Arrendamiento de Vivienda.

Sale price does not include costs or taxes. Additional costs for the buyer: inscription and notary fees, ITP (8% up to 400.000 euros, 9% from 400.000 to 700.000 euros and 10% from 700,000 euros) or, alternatively 10% VAT and AJD (1.5% on the purchase price) on new properties and subject to some requires to be met. This info is subject to errors, omissions, modifications, prior sale or withdrawal from the marke. Information sheet available, Decree 218/2005 Oct. 11th



Precio no incluye gastos ni tributos. Gastos adicionales por parte del comprador: Impuesto Sobre Transmisiones (8% hasta 400.000€, 9% de 400.000 a 700.000€ y 10% a partir de 700.000€), Actos Jurídicos Documentados 1,5% sobre el precio de compra, gastos de registro y notaría. Ficha informativa a su disposición en nuestra oficina según Decreto 218/2005 de 11/Oct.

Sale price does not include costs or taxes. Additional costs for the buyer: inscription and notary fees, ITP (8% up to 400.000 euros, 9% from 400.000 to 700.000 euros and 10% from 700.000 euros) or, alternatively 10% VAT and AJD (1.5% on the purchase price) on new properties and subject to some requites to be met. This info is subject to errors, omissions, modifications, prior sale or withdrawal from the marke. Information sheet available, Decree 218/2005 Oct. 11th