

MIDDLE FLOOR APARTMENT FOR SALE IN BENALMADENA

Price: 450,000 €

Ref: R4506673

Bedrooms: 2

Bathrooms: 2

Built size: 120 m²

Plot/Garden: 0 m²

Terrace: 30 m²

Completely renovated with high quality.

It has two bedrooms with built-in wardrobes and two full bathrooms. (One en suite)
In the master bedroom there is a slate shower tray, hydromassage column with rainwater and glass screen, natural stone sinks.

Independent and fully equipped kitchen.

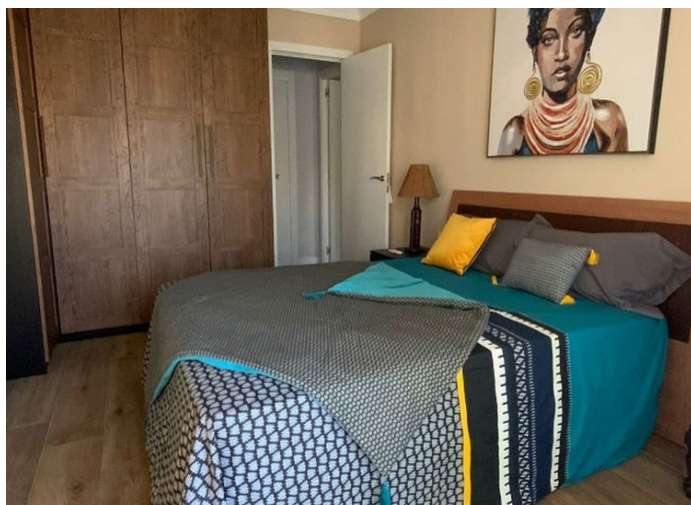
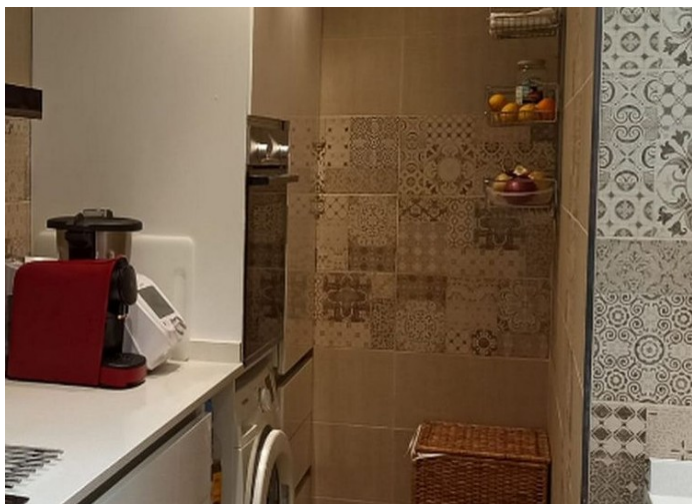
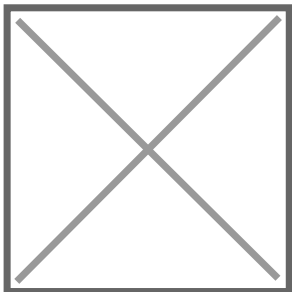
It has a very large living-dining room with access to the 30 m² terrace.

Walking distance from the beach and the promenade of Benalmádena Costa and Torremolinos (Carihuela).

Benalmádena Marina is famous for its stunning coastal setting.
It is an ideal place to live and rent.
We are at your disposal if you want to make a visit without obligation.

Precio no incluye gastos ni tributos. Gastos adicionales por parte del comprador: Impuesto Sobre Transmisiones (8% hasta 400.000€, 9% de 400.000 a 700.000€ y 10% a partir de 700.000€), Actos Jurídicos Documentados 1,5% sobre el precio de compra, gastos de registro y notaría. Ficha informativa a su disposición en nuestra oficina según Decreto 218/2005 de 11/Oct.

Sale price does not include costs or taxes. Additional costs for the buyer: inscription and notary fees, ITP (8% up to 400.000 euros, 9% from 400.000 to 700.000 euros and 10% from 700,000 euros) or, alternatively 10% VAT and AJD (1.5% on the purchase price) on new properties and subject to some requisites to be met. This info is subject to errors, omissions, modifications, prior sale or withdrawal from the market. Information sheet available, Decree 218/2005 Oct. 11th



Precio no incluye gastos ni tributos. Gastos adicionales por parte del comprador: Impuesto Sobre Transmisiones (8% hasta 400.000€, 9% de 400.000 a 700.000€ y 10% a partir de 700.000€), Actos Jurídicos Documentados 1,5% sobre el precio de compra, gastos de registro y notaría. Ficha informativa a su disposición en nuestra oficina según Decreto 218/2005 de 11/Oct.

Sale price does not include costs or taxes. Additional costs for the buyer: inscription and notary fees, ITP (8% up to 400.000 euros, 9% from 400.000 to 700.000 euros and 10% from 700.000 euros) or, alternatively 10% VAT and AJD (1.5% on the purchase price) on new properties and subject to some requites to be met. This info is subject to errors, omissions, modifications, prior sale or withdrawal from the marke. Information sheet available, Decree 218/2005 Oct. 11th