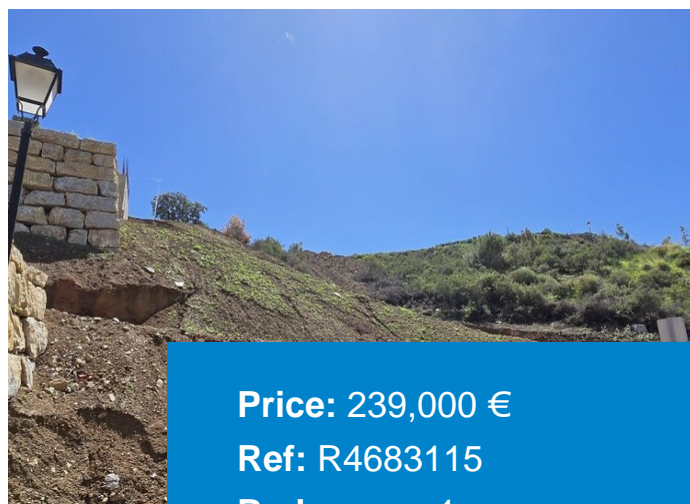




+ 34 951 69 00 74 + 36 620 249 227

INFO@BAHIAESTATES.COM



## RESIDENTIAL PLOT FOR SALE IN LA CALA GOLF

**Price:** 239,000 €

**Ref:** R4683115

**Bedrooms:** 1

**Bathrooms:** 1

**Built size:** 0 m<sup>2</sup>

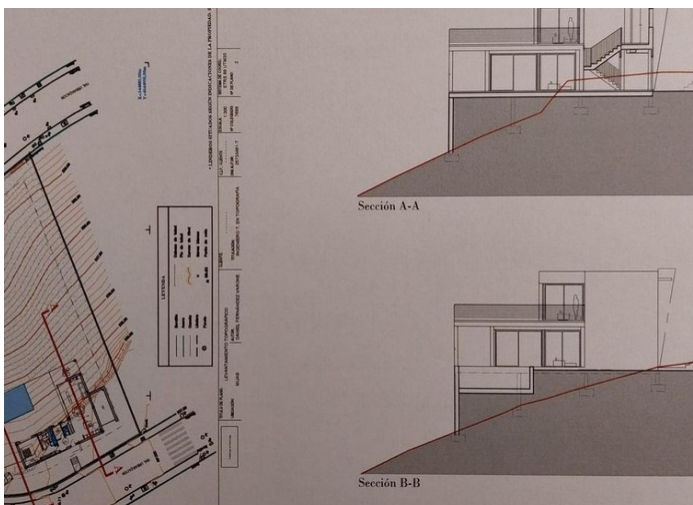
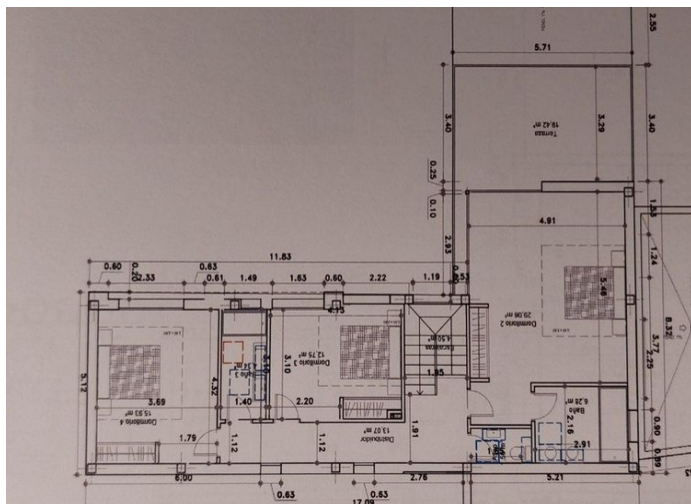
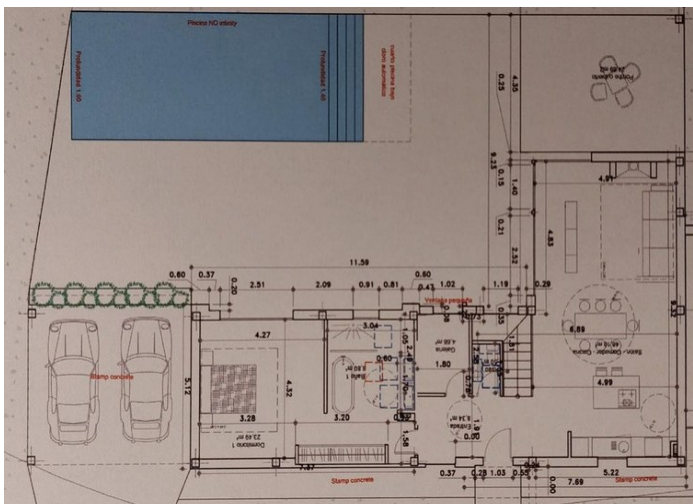
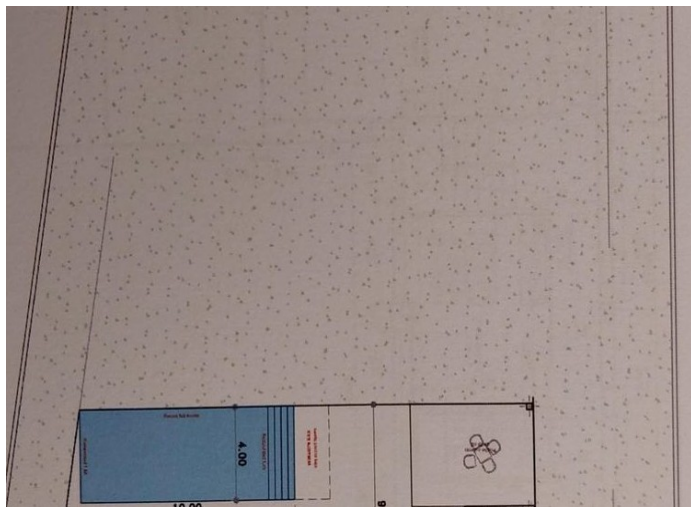
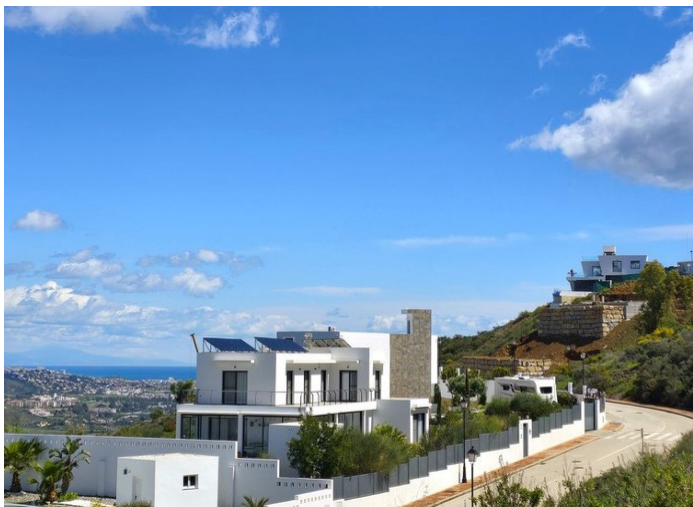
**Plot/Garden:** 1574 m<sup>2</sup>

**Terrace:** 5 m<sup>2</sup>

Excellent plot to built your villa (existing project) on a privileged elevated position with breathtaking mountains views. The plot is rather steep with a rectangular shape and 1.575m<sup>2</sup> giving the possibility to built 275m<sup>2</sup> villa (+terraces and underground level). The plot is being sold under the 7% ITP tax regime (rather than the 21% VAT regime, which represents a saving of more than €30,000).

Precio no incluye gastos ni tributos. Gastos adicionales por parte del comprador: Impuesto Sobre Transmisiones (8% hasta 400.000€, 9% de 400.000 a 700.000€ y 10% a partir de 700.000€), Actos Jurídicos Documentados 1,5% sobre el precio de compra, gastos de registro y notaría. Ficha informativa a su disposición en nuestra oficina según Decreto 218/2005 de 11/Oct.

Sale price does not include costs or taxes. Additional costs for the buyer: inscription and notary fees, ITP (8% up to 400.000 euros, 9% from 400.000 to 700.000 euros and 10% from 700.000 euros) or, alternatively 10% VAT and AJD (1.5% on the purchase price) on new properties and subject to some requites to be met. This info is subject to errors, omissions, modifications, prior sale or withdrawal from the marke. Information sheet available, Decree 218/2005 Oct. 11th



Precio no incluye gastos ni tributos. Gastos adicionales por parte del comprador: Impuesto Sobre Transmisiones (8% hasta 400.000€, 9% de 400.000 a 700.000€ y 10% a partir de 700.000€), Actos Jurídicos Documentados 1,5% sobre el precio de compra, gastos de registro y notaría. Ficha informativa a su disposición en nuestra oficina según Decreto 218/2005 de 11/Oct.

Sale price does not include costs or taxes. Additional costs for the buyer: inscription and notary fees, ITP (8% up to 400.000 euros, 9% from 400.000 to 700.000 euros and 10% from 700.000 euros) or, alternatively 10% VAT and AJD (1.5% on the purchase price) on new properties and subject to some requites to be met. This info is subject to errors, omissions, modifications, prior sale or withdrawal from the marke. Information sheet available, Decree 218/2005 Oct. 11th