



+ 34 951 69 00 74 + 36 620 249 227  
INFO@BAHIAESTATES.COM



## TOP FLOOR APARTMENT FOR SALE IN BENALMADENA

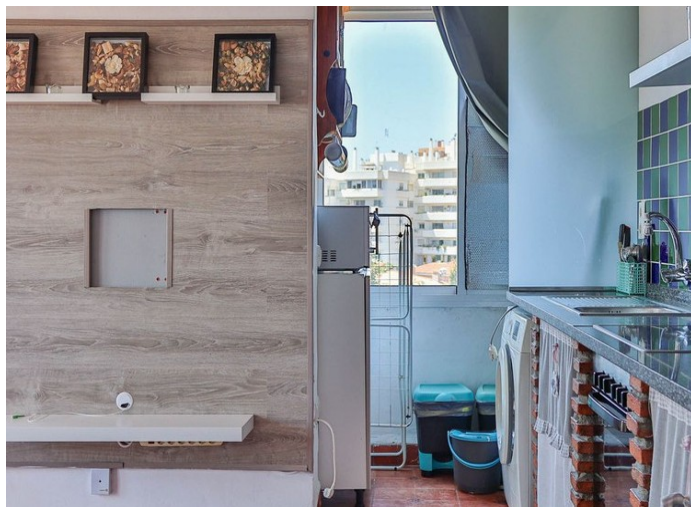
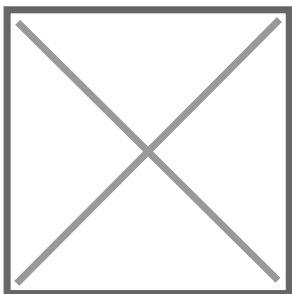
**Price:** 249,000 €  
**Ref:** R4715641  
**Bedrooms:** 3  
**Bathrooms:** 2  
**Built size:** 88 m<sup>2</sup>  
**Plot/Garden:** 0 m<sup>2</sup>  
**Terrace:** 20 m<sup>2</sup>

Lovely south-facing apartment in Benalmadena, with a FANTASTIC view to the sea from its 3 terraces, so you can wake up from bed and watch the sunrise over the Mediterranean.

The home consists of 3 bedrooms, 2 bathrooms, with living room and kitchen in one, however, you ~~must note that it is on the 4th floor without an elevator, but the housing complex with 33 homes~~

~~has plans to perhaps have it installed in the long term.~~  
Precio no incluye gastos ni tributos. Gastos adicionales para el comprador: inscripción y notaría (8% hasta 400.000€, 9% de 400.000 a 700.000€ y 10% a partir de 700.000€), Actos Jurídicos Documentados 1,5% sobre el precio de compra, gastos de registro y notaría. Ficha Informativa a su disposición en nuestra oficina según Decreto 218/2005 de 11/Oct.

Sale price does not include costs or taxes. Additional costs for the buyer: inscription and notary fees, ITP (8% up to 400.000 euros, 9% from 400.000 to 700.000 euros and 10% from 700,000 euros) or, alternatively 10% VAT and AJD (1.5% on the purchase price) on new properties and subject to some requires to be met. This info is subject to errors, omissions, modifications, prior sale or withdrawal from the marke. Information sheet available, Decree 218/2005 Oct. 11th



Precio no incluye gastos ni tributos. Gastos adicionales por parte del comprador: Impuesto Sobre Transmisiones (8% hasta 400.000€, 9% de 400.000 a 700.000€ y 10% a partir de 700.000€), Actos Jurídicos Documentados 1,5% sobre el precio de compra, gastos de registro y notaría. Ficha informativa a su disposición en nuestra oficina según Decreto 218/2005 de 11/Oct.

Sale price does not include costs or taxes. Additional costs for the buyer: inscription and notary fees, ITP (8% up to 400.000 euros, 9% from 400.000 to 700.000 euros and 10% from 700.000 euros) or, alternatively 10% VAT and AJD (1.5% on the purchase price) on new properties and subject to some requites to be met. This info is subject to errors, omissions, modifications, prior sale or withdrawal from the marke. Information sheet available, Decree 218/2005 Oct. 11th