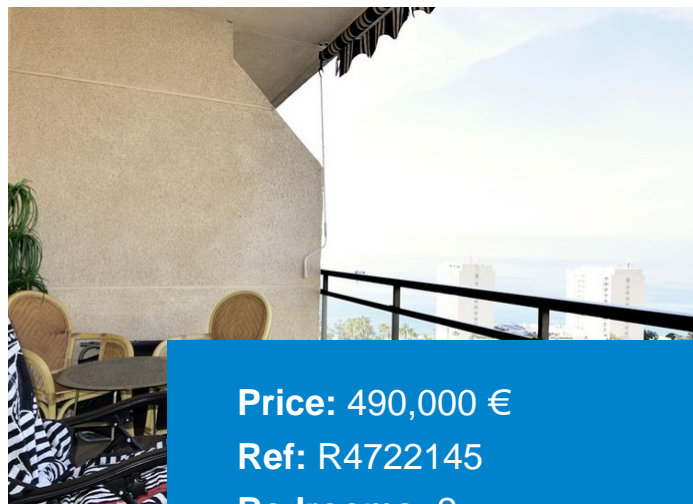


+ 34 951 69 00 74 + 36 620 249 227
INFO@BAHIAESTATES.COM



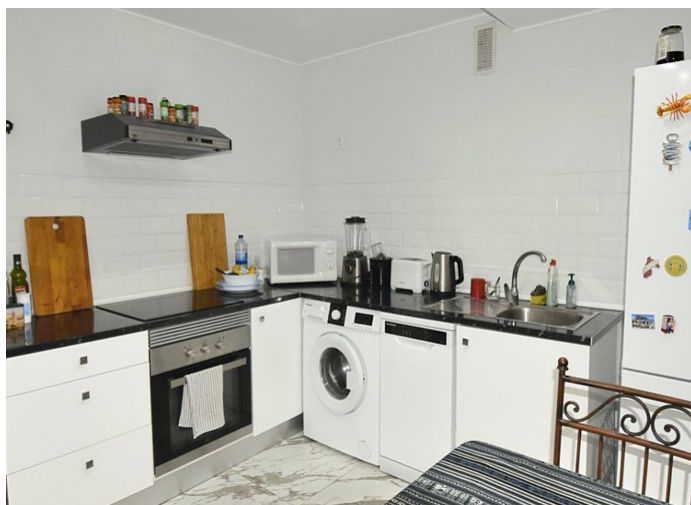
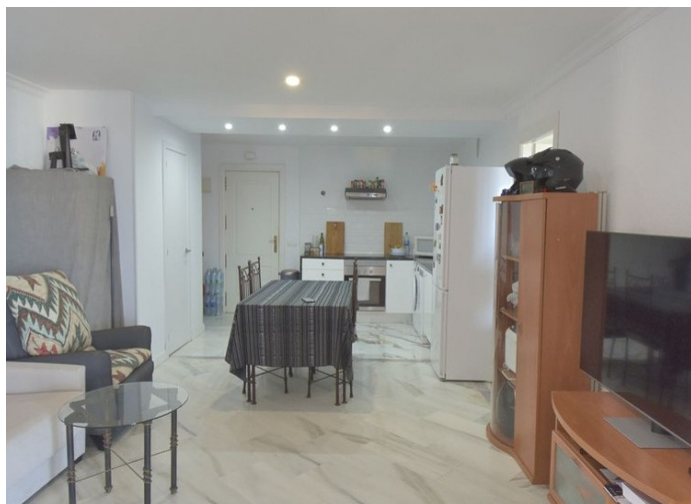
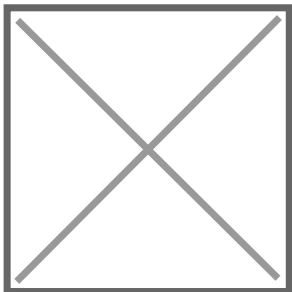
MIDDLE FLOOR APARTMENT FOR SALE IN BENALMADENA

Price: 490,000 €
Ref: R4722145
Bedrooms: 2
Bathrooms: 1.5
Built size: 107 m²
Plot/Garden: 0 m²
Terrace: 8 m²

Apartment with spectacular views in Benalmádena! Located in a modern complex, it is the dream of any lover of the sea and the sun. With panoramic sea views from its terrace and a privileged location close to transport, shops, restaurants and beach bars, it offers the perfect combination of comfort and entertainment. In addition, the private urbanization guarantees security with surveillance cameras and community parking. With beautiful gardens and three swimming pools with sea views, it is a true holiday paradise.

Precio no incluye gastos ni tributos. Gastos adicionales para el comprador: Inscrición y notaría, ITP (8% up to 400.000€, 9% de 400.000 a 700.000€ y 10% a partir de 700.000€), Actos Jurídicos Documentados 1,5% sobre el precio de compra, gastos de registro y notaría. Ficha informativa a su disposición en nuestra oficina según Decreto 218/2005 de 11/Oct.

Sale price does not include costs or taxes. Additional costs for the buyer: inscription and notary fees, ITP (8% up to 400.000 euros, 9% from 400.000 to 700.000 euros and 10% from 700.000 euros) or, alternatively 10% VAT and AJD (1.5% on the purchase price) on new properties and subject to some requites to be met. This info is subject to errors, omissions, modifications, prior sale or withdrawal from the marke. Information sheet available, Decree 218/2005 Oct. 11th



Precio no incluye gastos ni tributos. Gastos adicionales por parte del comprador: Impuesto Sobre Transmisiones (8% hasta 400.000€, 9% de 400.000 a 700.000€ y 10% a partir de 700.000€), Actos Jurídicos Documentados 1,5% sobre el precio de compra, gastos de registro y notaría. Ficha informativa a su disposición en nuestra oficina según Decreto 218/2005 de 11/Oct.

Sale price does not include costs or taxes. Additional costs for the buyer: inscription and notary fees, ITP (8% up to 400.000 euros, 9% from 400.000 to 700.000 euros and 10% from 700.000 euros) or, alternatively 10% VAT and AJD (1.5% on the purchase price) on new properties and subject to some requites to be met. This info is subject to errors, omissions, modifications, prior sale or withdrawal from the marke. Information sheet available, Decree 218/2005 Oct. 11th