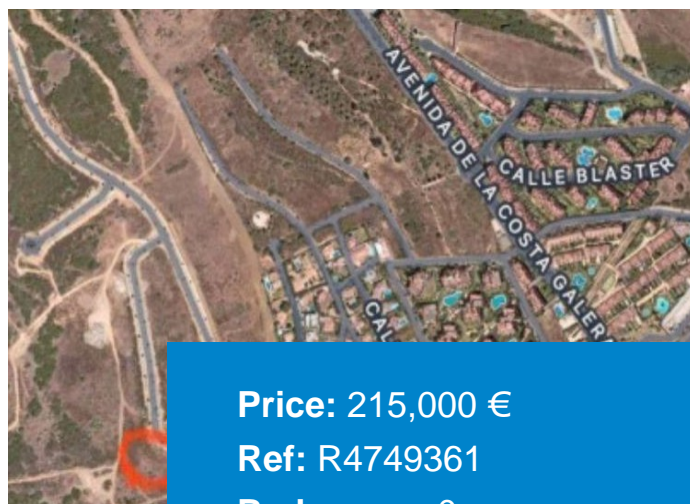
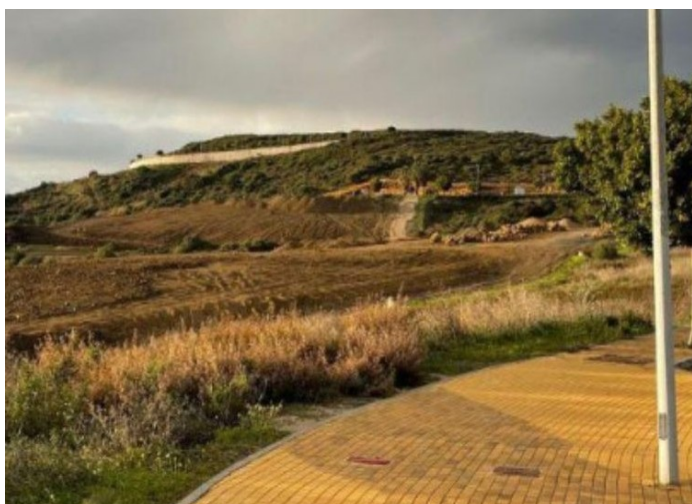


+ 34 951 69 00 74 + 36 620 249 227  
INFO@BAHIAESTATES.COM



## RESIDENTIAL PLOT FOR SALE IN CASARES PLAYA

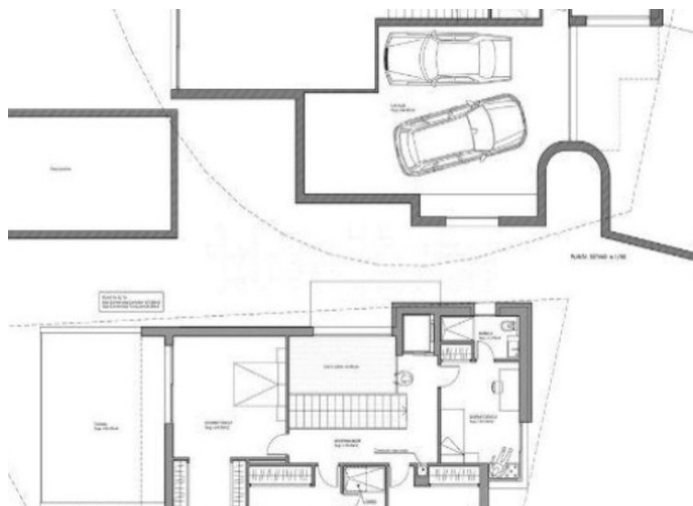
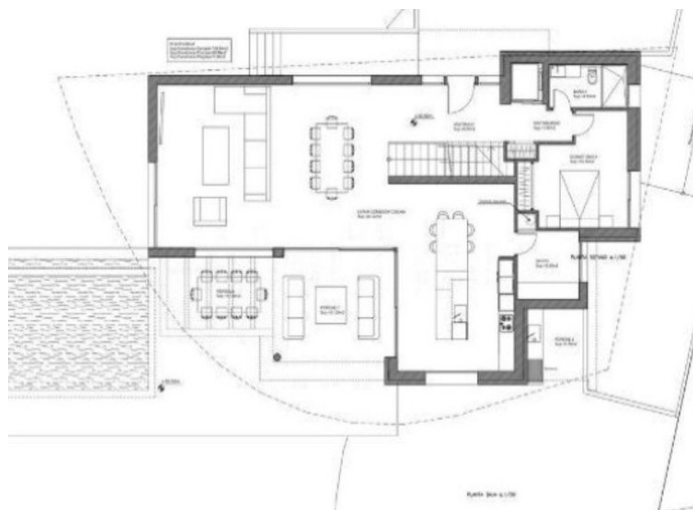
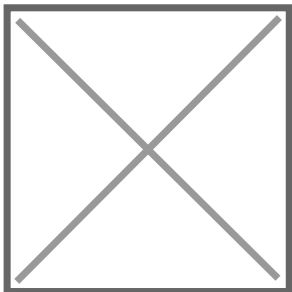
**Price:** 215,000 €  
**Ref:** R4749361  
**Bedrooms:** 0  
**Bathrooms:** 0  
**Built size:** 0 m<sup>2</sup>  
**Plot/Garden:** 870 m<sup>2</sup>  
**Terrace:** 0 m<sup>2</sup>

Residential Plot, Casares Playa, Costa del Sol.  
Garden/Plot 870 m<sup>2</sup>.  
there are 4 plots to choose or buying all price reduction  
Setting : Urbanisation.  
Orientation : South West.  
Pool : Room For Pool.  
Views : Mountain, Panoramic.

**Category:** Private Resale.

Precio no incluye gastos ni tributos. Gastos adicionales por parte del comprador: Impuesto de Transmisiones (8% hasta 400.000€, 9% de 400.000 a 700.000€ y 10% a partir de 700.000€), Actos Jurídicos Documentados 1,5% sobre el precio de compra, gastos de registro y notaría. Ficha informativa a su disposición en nuestra oficina según Ley 20/2014.

Sale price does not include costs or taxes. Additional costs for the buyer: inscription and notary fees, ITP (8% up to 400.000 euros, 9% from 400.000 to 700.000 euros and 10% from 700.000 euros) or, alternatively 10% VAT and AJD (1.5% on the purchase price) on new properties and subject to some requires to be met. This info is subject to errors, omissions, modifications, prior sale or withdrawal from the market. Information sheet available, Decree 218/2005 Oct. 11th



Precio no incluye gastos ni tributos. Gastos adicionales por parte del comprador: Impuesto Sobre Transmisiones (8% hasta 400.000€, 9% de 400.000 a 700.000€ y 10% a partir de 700.000€), Actos Jurídicos Documentados 1,5% sobre el precio de compra, gastos de registro y notaría. Ficha informativa a su disposición en nuestra oficina según Decreto 218/2005 de 11/Oct.

Sale price does not include costs or taxes. Additional costs for the buyer: inscription and notary fees, ITP (8% up to 400.000 euros, 9% from 400.000 to 700.000 euros and 10% from 700.000 euros) or, alternatively 10% VAT and AJD (1.5% on the purchase price) on new properties and subject to some requites to be met. This info is subject to errors, omissions, modifications, prior sale or withdrawal from the marke. Information sheet available, Decree 218/2005 Oct. 11th