

MIDDLE FLOOR APARTMENT FOR SALE IN MANILVA

Price: 398,000 €

Ref: R4812862

Bedrooms: 3

Bathrooms: 3

Built size: 170 m²

Plot/Garden: 0 m²

Terrace: 20 m²

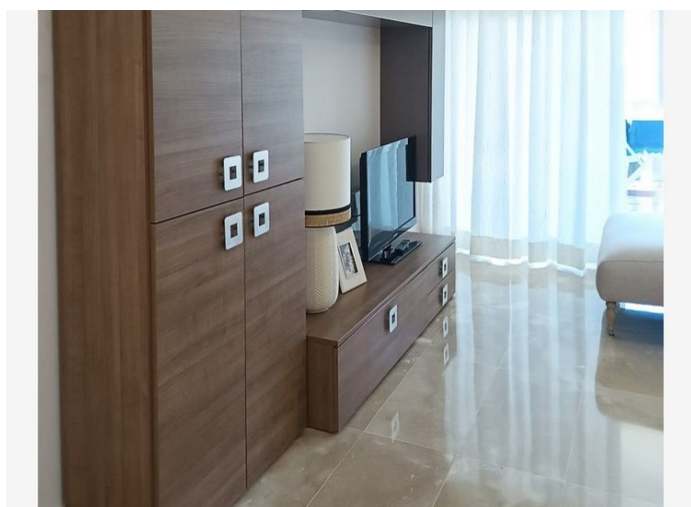
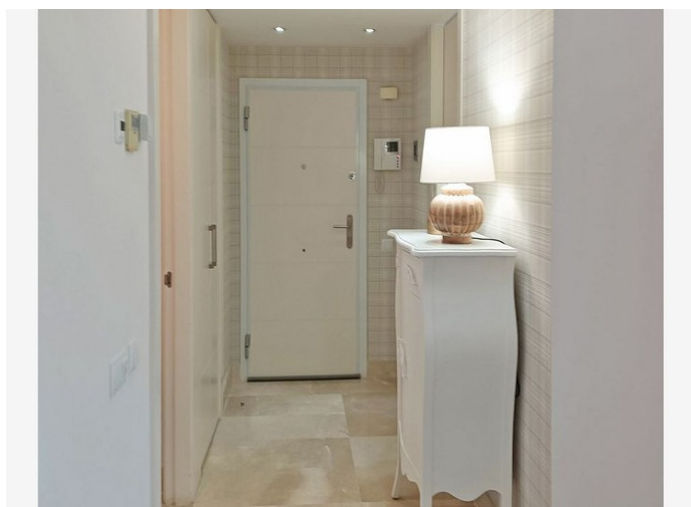
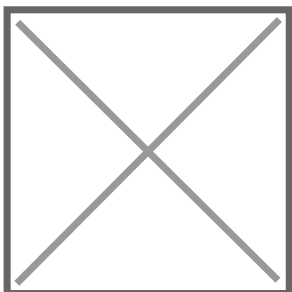
Living the exclusive and unique experience of enjoying this dream apartment located in the prestigious La Paloma urbanization is possible. Strategically located between the marinas of La Duquesa and Sotogrande, this apartment offers quick access to the wonders of the Costa del Sol.

Gibraltar and Malaga airports are within walking distance, making travel easy.

Construction with an attractive contemporary and efficient design, with a large pool to enjoy the hours of sunshine, and a heated pool to do so during the winter, as well as beautiful gardens that **give the environment a unique and personal atmosphere.**

Precio no incluye gastos ni tributos. Gastos adicionales por parte del comprador: Impuesto Sobre Transmisiones (8% hasta 400.000€, 9% de 400.000 a 700.000€ y 10% a partir de 700.000€), Actos Jurídicos Documentados 1,5% sobre el precio de compra, gastos de registro y notaría. Ficha informativa a su disposición en nuestra oficina según Decreto 218/2005 de 11/Oct.

Sale price does not include costs or taxes. Additional costs for the buyer: inscription and notary fees, ITP (8% up to 400.000 euros, 9% from 400.000 to 700.000 euros and 10% from 700.000 euros) or, alternatively 10% VAT and AJD (1.5% on the purchase price) on new properties and subject to some requires to be met. This info is subject to errors, omissions, modifications, prior sale or withdrawal from the market. Information sheet available, Decree 218/2005 Oct. 11th



Precio no incluye gastos ni tributos. Gastos adicionales por parte del comprador: Impuesto Sobre Transmisiones (8% hasta 400.000€, 9% de 400.000 a 700.000€ y 10% a partir de 700.000€), Actos Jurídicos Documentados 1,5% sobre el precio de compra, gastos de registro y notaría. Ficha informativa a su disposición en nuestra oficina según Decreto 218/2005 de 11/Oct.

Sale price does not include costs or taxes. Additional costs for the buyer: inscription and notary fees, ITP (8% up to 400.000 euros, 9% from 400.000 to 700.000 euros and 10% from 700.000 euros) or, alternatively 10% VAT and AJD (1.5% on the purchase price) on new properties and subject to some requites to be met. This info is subject to errors, omissions, modifications, prior sale or withdrawal from the marke. Information sheet available, Decree 218/2005 Oct. 11th