



PENTHOUSE DUPLEX FOR SALE IN NEW GOLDEN MILE

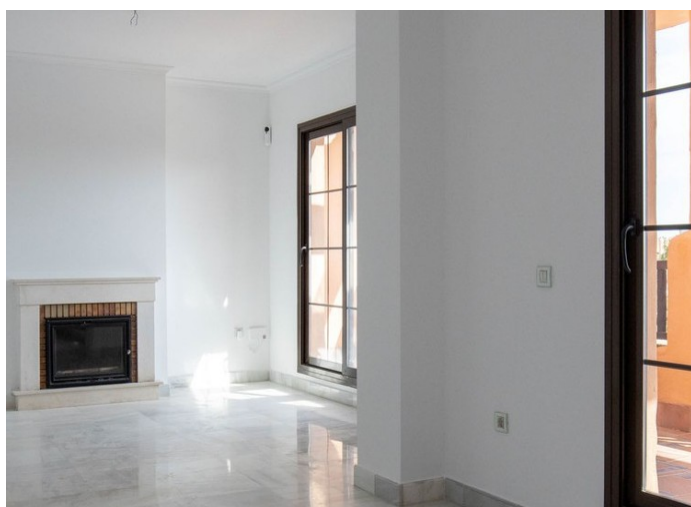
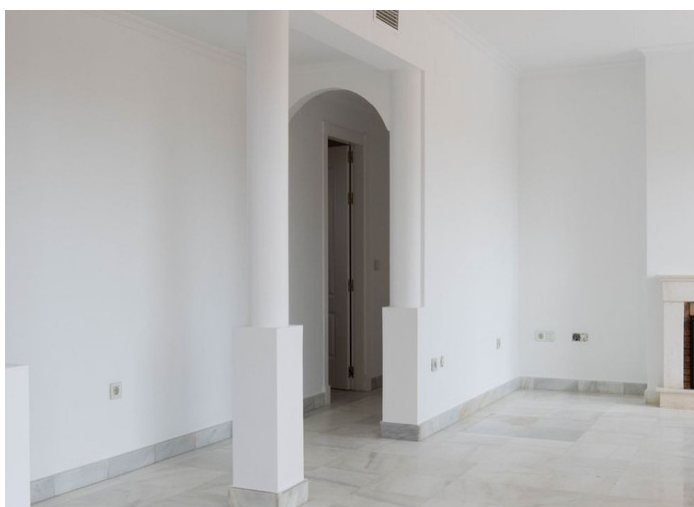
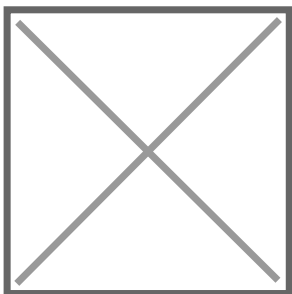
Price: 515,000 €
Ref: R4827475
Bedrooms: 2
Bathrooms: 2
Built size: 158 m²
Plot/Garden: 0 m²
Terrace: 144 m²

It is a luxury, beachside complex located just to the west of San Pedro de Alcántara and is well known for having high quality specifications, excellent facilities and the most spacious grounds and gardens in the area. It has received a number of accolades since it was completed including the prize of “Best Landscaped Gardens in Estepona” in 2017 and they remain perfectly maintained still today.

~~The facilities are proudly maintained and extensive. There is very good 24 hour security and superb pool areas as well as extensive lawns.~~

Precio no incluye gastos ni tributos. Gastos adicionales por el comprador: Inscrición y notaría (hasta 400.000€, 9% de 400.000 a 700.000€ y 10% a partir de 700.000€), Actos Jurídicos Documentados 1,5% sobre el precio de compra, gastos de registro y notaría. Ficha informativa a su disposición en nuestra oficina según Decreto 218/2005 de 11/Oct.

Sale price does not include costs or taxes. Additional costs for the buyer: inscription and notary fees, ITP (8% up to 400.000 euros, 9% from 400.000 to 700.000 euros and 10% from 700,000 euros) or, alternatively 10% VAT and AJD (1.5% on the purchase price) on new properties and subject to some requites to be met. This info is subject to errors, omissions, modifications, prior sale or withdrawal from the marke. Information sheet available, Decree 218/2005 Oct. 11th



Precio no incluye gastos ni tributos. Gastos adicionales por parte del comprador: Impuesto Sobre Transmisiones (8% hasta 400.000€, 9% de 400.000 a 700.000€ y 10% a partir de 700.000€), Actos Jurídicos Documentados 1,5% sobre el precio de compra, gastos de registro y notaría. Ficha informativa a su disposición en nuestra oficina según Decreto 218/2005 de 11/Oct.

Sale price does not include costs or taxes. Additional costs for the buyer: inscription and notary fees, ITP (8% up to 400.000 euros, 9% from 400.000 to 700.000 euros and 10% from 700.000 euros) or, alternatively 10% VAT and AJD (1.5% on the purchase price) on new properties and subject to some requites to be met. This info is subject to errors, omissions, modifications, prior sale or withdrawal from the marke. Information sheet available, Decree 218/2005 Oct. 11th