



MIDDLE FLOOR APARTMENT FOR SALE IN ELVIRIA

Price: 349,000 €
Ref: R4827595
Bedrooms: 2
Bathrooms: 2
Built size: 116 m²
Plot/Garden: 0 m²
Terrace: 45 m²

LARGE APARTMENT WITH EXCELLENT QUALITIES NEXT TO THE SANTA MARIA GOLF COURSE IN ELVIRIA!

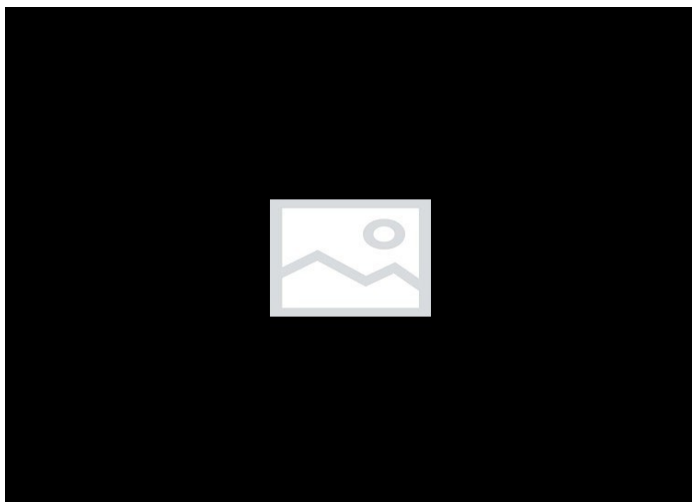
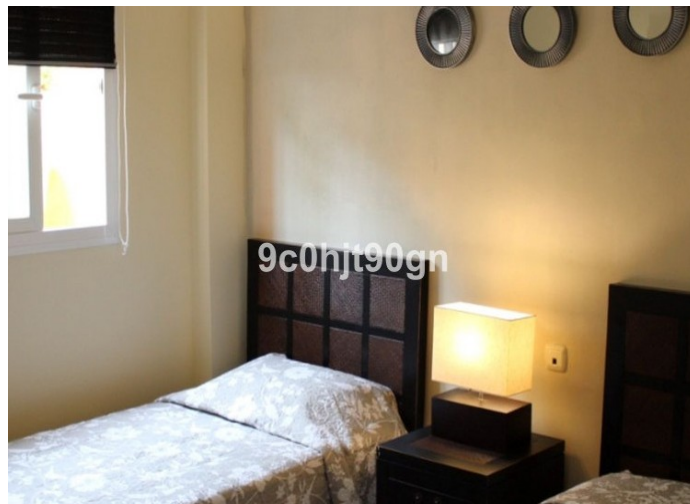
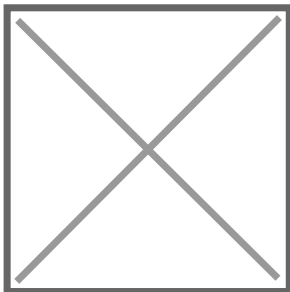
Located in the heart of Elviria, this exceptional apartment is just steps away from the famous Santa María Golf Course and only few minutes drive from all the services in Elviria Square, shops, restaurants, etc. , and a five-minute drive from the beautiful beaches of the area.

The apartment stands out for its spaciousness and brightness, with nearly 120m² of built space.. The bright living-dining room has access to terrace with pleasant open views of the golf course

and mountains is fully equipped.

Precio no incluye gastos ni tributos. Gastos adicionales por parte del comprador: Impuesto Sobre Transmisiones (8% hasta 400.000€, 9% de 400.000 a 700.000€ y 10% a partir de 700.000€), Actos Jurídicos Documentados 1,5% sobre el precio de compra, gastos de registro y notaría. Ficha informativa a su disposición en nuestra oficina según Decreto 218/2005 de 11/Oct.

Sale price does not include costs or taxes. Additional costs for the buyer: inscription and notary fees, ITP (8% up to 400.000 euros, 9% from 400.000 to 700.000 euros and 10% from 700.000 euros) or, alternatively 10% VAT and AJD (1.5% on the purchase price) on new properties and subject to some requisites to be met. This info is subject to errors, omissions, modifications, prior sale or withdrawal from the market. Information sheet available, Decree 218/2005 Oct. 11th



Precio no incluye gastos ni tributos. Gastos adicionales por parte del comprador: Impuesto Sobre Transmisiones (8% hasta 400.000€, 9% de 400.000 a 700.000€ y 10% a partir de 700.000€), Actos Jurídicos Documentados 1,5% sobre el precio de compra, gastos de registro y notaría. Ficha informativa a su disposición en nuestra oficina según Decreto 218/2005 de 11/Oct.

Sale price does not include costs or taxes. Additional costs for the buyer: inscription and notary fees, ITP (8% up to 400.000 euros, 9% from 400.000 to 700.000 euros and 10% from 700.000 euros) or, alternatively 10% VAT and AJD (1.5% on the purchase price) on new properties and subject to some requites to be met. This info is subject to errors, omissions, modifications, prior sale or withdrawal from the marke. Information sheet available, Decree 218/2005 Oct. 11th