

+ 34 951 69 00 74 + 36 620 249 227

INFO@BAHIAESTATES.COM



## GROUND FLOOR APARTMENT FOR SALE IN ESTEPONA

**Price:** 225,000 €

**Ref:** R4831261

**Bedrooms:** 2

**Bathrooms:** 2

**Built size:** 98 m<sup>2</sup>

**Plot/Garden:** 0 m<sup>2</sup>

**Terrace:** 0 m<sup>2</sup>

Ground floor apartment with 2 bedrooms 2 bathrooms , ideal to live the whole year or to spend you holidays in a quiet and well maintained complex.

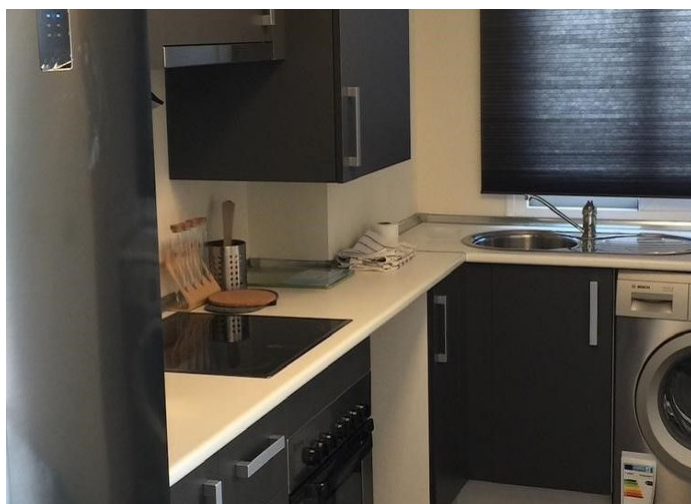
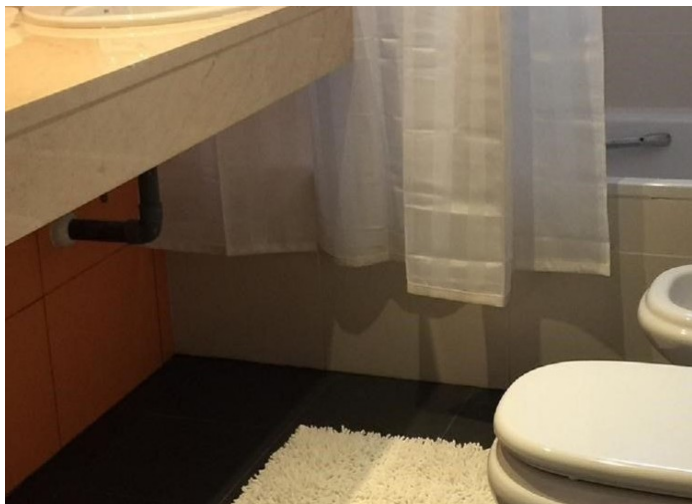
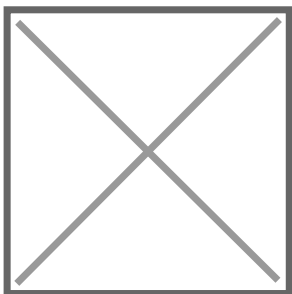
Cover terrace

Underground parking included in the price, but if you have guest there is a plenty space to park. The property it is 2 minutes drive to the Golf club house and 5 minutes driving to Estepona Center and the beach.

Precio no incluye gastos ni tributos. Gastos adicionales por parte del comprador: Impuesto Sobre Transmisiones (8% hasta 400.000€, 9% de 400.000 a 700.000€ y 10% a partir de 700.000€), Actos Jurídicos Documentados 1,5% sobre el precio de compra, gastos de registro y notaría. Ficha informativa a su disposición en nuestra oficina según Decreto 218/2005 de 11/Oct.

Sale price does not include costs or taxes. Additional costs for the buyer: inscription and notary fees, ITP (8% up to 400.000 euros, 9% from 400.000 to 700.000 euros and 10% from 700.000 euros) or, alternatively 10% VAT and AJD (1.5% on the purchase price) on new properties and subject to some requites to be met. This info is subject to errors, omissions, modifications, prior sale or withdrawal from the marke. Information sheet available, Decree 218/2005 Oct. 11th





Precio no incluye gastos ni tributos. Gastos adicionales por parte del comprador: Impuesto Sobre Transmisiones (8% hasta 400.000€, 9% de 400.000 a 700.000€ y 10% a partir de 700.000€), Actos Jurídicos Documentados 1,5% sobre el precio de compra, gastos de registro y notaría. Ficha informativa a su disposición en nuestra oficina según Decreto 218/2005 de 11/Oct.

Sale price does not include costs or taxes. Additional costs for the buyer: inscription and notary fees, ITP (8% up to 400.000 euros, 9% from 400.000 to 700.000 euros and 10% from 700.000 euros) or, alternatively 10% VAT and AJD (1.5% on the purchase price) on new properties and subject to some requites to be met. This info is subject to errors, omissions, modifications, prior sale or withdrawal from the marke. Information sheet available, Decree 218/2005 Oct. 11th