

+ 34 951 69 00 74 + 36 620 249 227
INFO@BAHIAESTATES.COM



PENTHOUSE DUPLEX FOR SALE IN BENALMADENA

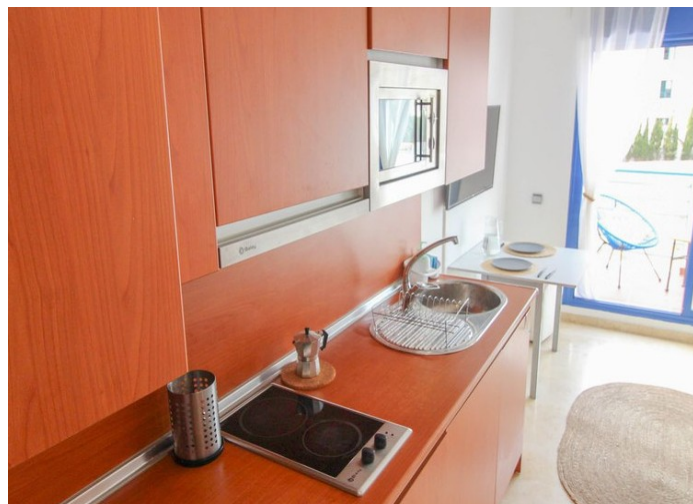
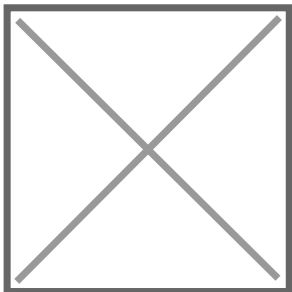
Price: 274,999 €
Ref: R4836091
Bedrooms: 1
Bathrooms: 1
Built size: 87 m²
Plot/Garden: 0 m²
Terrace: 30 m²

Stunning 1-Bedroom Penthouse with rooftop terrace in Benalmadena

Discover your dream home in this exceptional 1-bedroom, 1-bath apartment featuring two inviting terraces. Enjoy your morning coffee or evening sunset on the spacious terrace connected to the living area. A charming spiral staircase leads you to the expansive 30 sqm rooftop terrace, perfect for sunbathing and entertaining, complete with a dedicated grilling area.

Precio no incluye gastos ni tributos. Gastos adicionales por parte del comprador: Impuesto Sobre Transmisiones (8% hasta 400.000€, 9% de 400.000 a 700.000€ y 10% a partir de 700.000€), Actos Jurídicos Documentados 1,5% sobre el precio de compra, gastos de registro y notaría. Ficha informativa a su disposición en nuestra oficina según Decreto 218/2005 de 11/Oct.

Sale price does not include costs or taxes. Additional costs for the buyer: inscription and notary fees, ITP (8% up to 400.000 euros, 9% from 400.000 to 700.000 euros and 10% from 700.000 euros) or, alternatively 10% VAT and AJD (1.5% on the purchase price) on new properties and subject to some requires to be met. This info is subject to errors, omissions, modifications, prior sale or withdrawal from the market. Information sheet available, Decree 218/2005 Oct. 11th



Precio no incluye gastos ni tributos. Gastos adicionales por parte del comprador: Impuesto Sobre Transmisiones (8% hasta 400.000€, 9% de 400.000 a 700.000€ y 10% a partir de 700.000€), Actos Jurídicos Documentados 1,5% sobre el precio de compra, gastos de registro y notaría. Ficha informativa a su disposición en nuestra oficina según Decreto 218/2005 de 11/Oct.

Sale price does not include costs or taxes. Additional costs for the buyer: inscription and notary fees, ITP (8% up to 400.000 euros, 9% from 400.000 to 700.000 euros and 10% from 700.000 euros) or, alternatively 10% VAT and AJD (1.5% on the purchase price) on new properties and subject to some requites to be met. This info is subject to errors, omissions, modifications, prior sale or withdrawal from the marke. Information sheet available, Decree 218/2005 Oct. 11th