



MIDDLE FLOOR APARTMENT FOR SALE IN BENALMADENA

Price: 478,000 €

Ref: R4838041

Bedrooms: 2

Bathrooms: 2

Built size: 115 m²

Plot/Garden: 0 m²

Terrace: 30 m²

APARTMENT IN PUERTO MARINA BENALMADENA

This incredible property has 2 bedrooms, 2 bathrooms, large living room - dining room, kitchen and a large sunny terrace. Perfect location because it is in the heart of Puerto Marina, with all kinds of shops and restaurants. Bus and taxi stops. DO NOT MISS THIS OPPORTUNITY AT THIS PRICE...

Middle Floor Apartment, Benalmadena, Costa del Sol.

2 Bedrooms, 2 Bathrooms, Built 115 m², Terrace 30 m².

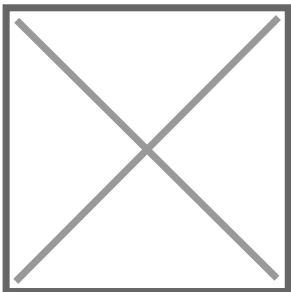
Setting : Commercial Area, Beachside, Port, Marina, Urbanisation.

Orientation : South, South West.

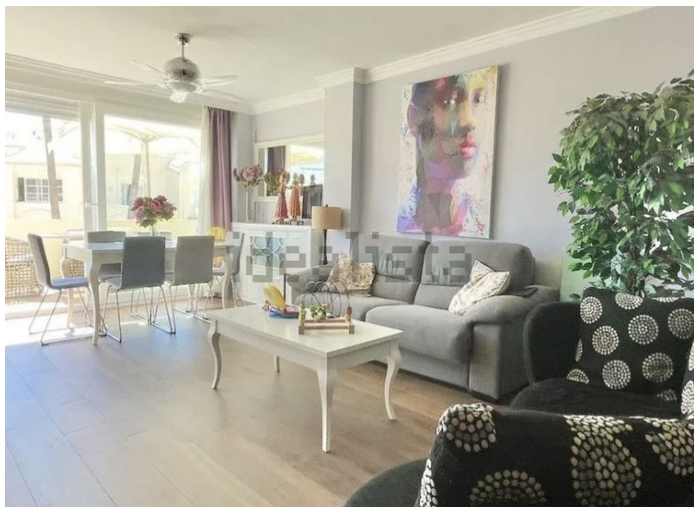
Condition : Excellent.

Precio no incluye gastos ni tributos. Gastos adicionales por parte del comprador: Impuesto Sobre Transmisiones (8% hasta 400.000€, 9% de 400.000 a 700.000€ y 10% a partir de 700.000€), Actos Jurídicos Documentados 1,5% sobre el precio de compra, gastos de registro y notaría. Ficha informativa a su disposición en nuestra oficina según Decreto 218/2005 de 11/Oct.

Sale price does not include costs or taxes. Additional costs for the buyer: inscription and notary fees, ITP (8% up to 400.000 euros, 9% from 400.000 to 700.000 euros and 10% from 700.000 euros) or, alternatively 10% VAT and AJD (1.5% on the purchase price) on new properties and subject to some requisites to be met. This info is subject to errors, omissions, modifications, prior sale or withdrawal from the market. Information sheet available, Decree 218/2005 Oct. 11th



+ 34 951 69 00 74 + 36 620 249 227
INFO@BAHIAESTATES.COM



Precio no incluye gastos ni tributos. Gastos adicionales por parte del comprador: Impuesto Sobre Transmisiones (8% hasta 400.000€, 9% de 400.000 a 700.000€ y 10% a partir de 700.000€), Actos Jurídicos Documentados 1,5% sobre el precio de compra, gastos de registro y notaría. Ficha informativa a su disposición en nuestra oficina según Decreto 218/2005 de 11/Oct.

Sale price does not include costs or taxes. Additional costs for the buyer: inscription and notary fees, ITP (8% up to 400.000 euros, 9% from 400.000 to 700.000 euros and 10% from 700.000 euros) or, alternatively 10% VAT and AJD (1.5% on the purchase price) on new properties and subject to some requites to be met. This info is subject to errors, omissions, modifications, prior sale or withdrawal from the marke. Information sheet available, Decree 218/2005 Oct. 11th