

MIDDLE FLOOR APARTMENT FOR SALE IN BENALMADENA

Price: 265,000 €
Ref: R4874752
Bedrooms: 1
Bathrooms: 1
Built size: 60 m²
Plot/Garden: 0 m²
Terrace: 0 m²

APARTMENT IN BENAL BEACH WITH SIDE SEA VIEW

Incredible opportunity facing the sea, large complex, 1 bedroom, 1 bathroom, living room - dining room, terraces. Sold furnished, air conditioning, large pool area, communal garden. 24-hour reception and communal parking. In the same complex there are shops, supermarkets, gym and offices.

Middle Floor Apartment, Benalmadena, Costa del Sol.

1 Bedroom, 1 Bathroom, Built 60 m².

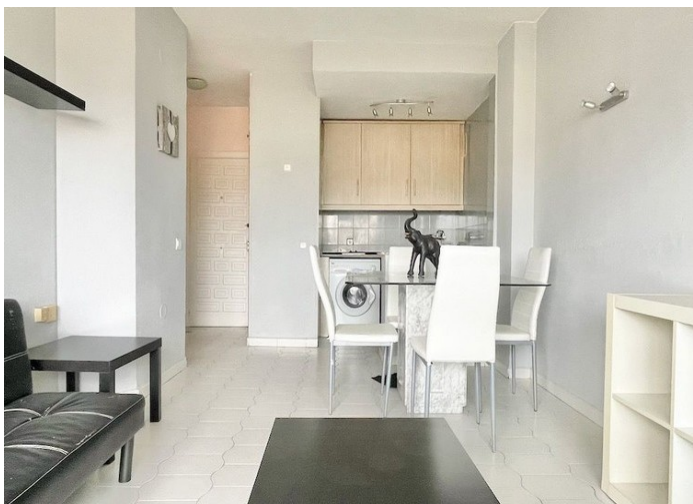
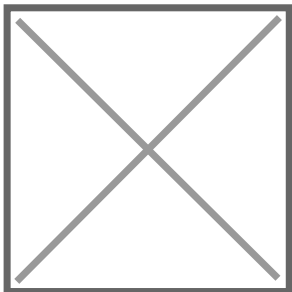
Setting : Beachfront, Commercial Area, Beachside, Close To Shops, Urbanisation.

Orientation : West.

Condition : Excellent.

Precio no incluye gastos ni tributos. Gastos adicionales por parte del comprador: Impuesto Sobre Transmisiones (8% hasta 400.000€, 9% de 400.000 a 700.000€ y 10% a partir de 700.000€), Actos Jurídicos Documentados 1,5% sobre el precio de compra, gastos de registro y notaría. Ficha informativa a su disposición en nuestra oficina según Decreto 218/2005 de 11/Oct.

Sale price does not include costs or taxes. Additional costs for the buyer: inscription and notary fees, ITP (8% up to 400.000 euros, 9% from 400.000 to 700.000 euros and 10% from 700,000 euros) or, alternatively 10% VAT and AJD (1.5% on the purchase price) on new properties and subject to some requites to be met. This info is subject to errors, omissions, modifications, prior sale or withdrawal from the marke. Information sheet available, Decree 218/2005 Oct. 11th



Precio no incluye gastos ni tributos. Gastos adicionales por parte del comprador: Impuesto Sobre Transmisiones (8% hasta 400.000€, 9% de 400.000 a 700.000€ y 10% a partir de 700.000€), Actos Jurídicos Documentados 1,5% sobre el precio de compra, gastos de registro y notaría. Ficha informativa a su disposición en nuestra oficina según Decreto 218/2005 de 11/Oct.

Sale price does not include costs or taxes. Additional costs for the buyer: inscription and notary fees, ITP (8% up to 400.000 euros, 9% from 400.000 to 700.000 euros and 10% from 700.000 euros) or, alternatively 10% VAT and AJD (1.5% on the purchase price) on new properties and subject to some requites to be met. This info is subject to errors, omissions, modifications, prior sale or withdrawal from the marke. Information sheet available, Decree 218/2005 Oct. 11th