



+ 34 951 69 00 74 + 36 620 249 227

INFO@BAHIAESTATES.COM



MIDDLE FLOOR APARTMENT FOR SALE IN MARBELLA

Price: 440,000 €

Ref: R4874926

Bedrooms: 3

Bathrooms: 2

Built size: 165 m²

Plot/Garden: 0 m²

Terrace: 9 m²

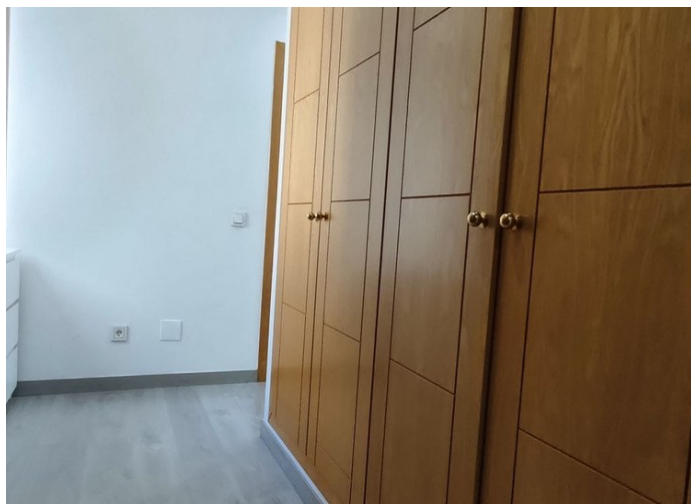
Discover this exclusive and bright apartment with 3 spacious bedrooms and 2 full bathrooms, ideal for those seeking comfort and style in one of the most desirable areas. The master bedroom stands out with its elegant dressing area and en-suite bathroom, providing privacy and sophistication. The spacious, sunlit living room opens onto a terrace with unobstructed views of the iconic "La Concha" mountain—perfect for relaxing and enjoying the scenery.

Precio no incluye gastos ni tributos. Gastos adicionales por parte del comprador: Impuesto Sobre Transmisiones (8% hasta 400.000€, 9% de 400.000 a 700.000€ y 10% a partir de 700.000€), Actos Jurídicos Documentados 1,5% sobre el precio de compra, gastos de registro y notaría. Ficha informativa a su disposición en nuestra oficina según Decreto 218/2005 de 11/Oct.

Sale price does not include costs or taxes. Additional costs for the buyer: inscription and notary fees, ITP (8% up to 400.000 euros, 9% from 400.000 to 700.000 euros and 10% from 700.000 euros) or, alternatively 10% VAT and AJD (1.5% on the purchase price) on new properties and subject to some requires to be met. This info is subject to errors, omissions, modifications, prior sale or withdrawal from the market. Information sheet available, Decree 218/2005 Oct. 11th



+ 34 951 69 00 74 + 36 620 249 227
INFO@BAHIAESTATES.COM



Precio no incluye gastos ni tributos. Gastos adicionales por parte del comprador: Impuesto Sobre Transmisiones (8% hasta 400.000€, 9% de 400.000 a 700.000€ y 10% a partir de 700.000€), Actos Jurídicos Documentados 1,5% sobre el precio de compra, gastos de registro y notaría. Ficha informativa a su disposición en nuestra oficina según Decreto 218/2005 de 11/Oct.

Sale price does not include costs or taxes. Additional costs for the buyer: inscription and notary fees, ITP (8% up to 400.000 euros, 9% from 400.000 to 700.000 euros and 10% from 700.000 euros) or, alternatively 10% VAT and AJD (1.5% on the purchase price) on new properties and subject to some requites to be met. This info is subject to errors, omissions, modifications, prior sale or withdrawal from the marke. Information sheet available, Decree 218/2005 Oct. 11th