

## TOWNHOUSE FOR SALE IN COSTALITA

**Price:** 540,000 €

**Ref:** R4875628

**Bedrooms:** 2

**Bathrooms:** 2

**Built size:** 189 m<sup>2</sup>

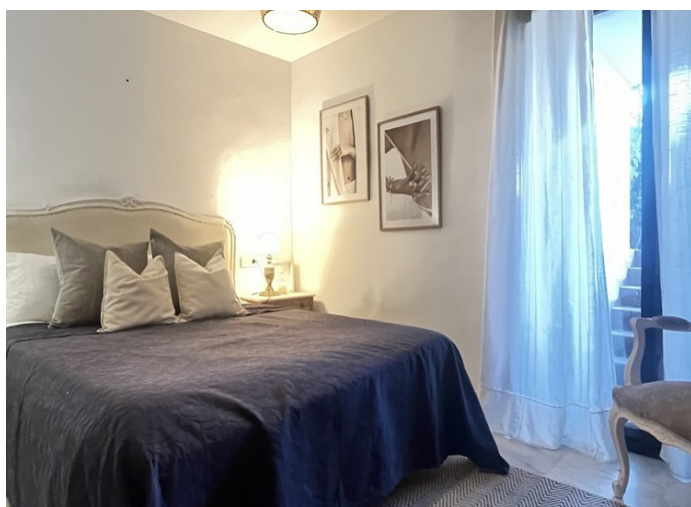
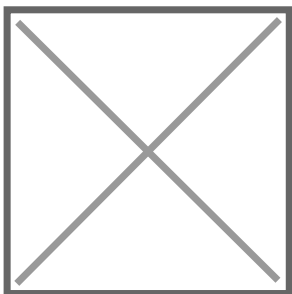
**Plot/Garden:** 0 m<sup>2</sup>

**Terrace:** 0 m<sup>2</sup>

This charming 2-bedroom, 2-bathroom townhouse is ideally located just a 2-minute walk from the beautiful beach of Costalita. Nestled in a tranquil, well-maintained community, it offers easy access to nearby amenities, including shops, restaurants, and services, making it perfect for both holiday getaways and year-round living. The property is only a 10-minute drive from the vibrant Puerto Banús, renowned for its marina, luxury shopping, and dining.

Precio no incluye gastos ni tributos. Gastos adicionales por parte del comprador: Impuesto Sobre Transmisiones (8% hasta 400.000€, 9% de 400.000 a 700.000€ y 10% a partir de 700.000€), Actos Jurídicos Documentados 1,5% sobre el precio de compra, gastos de registro y notaría. Ficha informativa a su disposición en nuestra oficina según Decreto 218/2005 de 11/Oct.

Sale price does not include costs or taxes. Additional costs for the buyer: inscription and notary fees, ITP (8% up to 400.000 euros, 9% from 400.000 to 700.000 euros and 10% from 700.000 euros) or, alternatively 10% VAT and AJD (1.5% on the purchase price) on new properties and subject to some requites to be met. This info is subject to errors, omissions, modifications, prior sale or withdrawal from the marke. Information sheet available, Decree 218/2005 Oct. 11th



Precio no incluye gastos ni tributos. Gastos adicionales por parte del comprador: Impuesto Sobre Transmisiones (8% hasta 400.000€, 9% de 400.000 a 700.000€ y 10% a partir de 700.000€), Actos Jurídicos Documentados 1,5% sobre el precio de compra, gastos de registro y notaría. Ficha informativa a su disposición en nuestra oficina según Decreto 218/2005 de 11/Oct.

Sale price does not include costs or taxes. Additional costs for the buyer: inscription and notary fees, ITP (8% up to 400.000 euros, 9% from 400.000 to 700.000 euros and 10% from 700.000 euros) or, alternatively 10% VAT and AJD (1.5% on the purchase price) on new properties and subject to some requites to be met. This info is subject to errors, omissions, modifications, prior sale or withdrawal from the marke. Information sheet available, Decree 218/2005 Oct. 11th