



+ 34 951 69 00 74 + 36 620 249 227
INFO@BAHIAESTATES.COM



MIDDLE FLOOR APARTMENT FOR SALE IN MANILVA

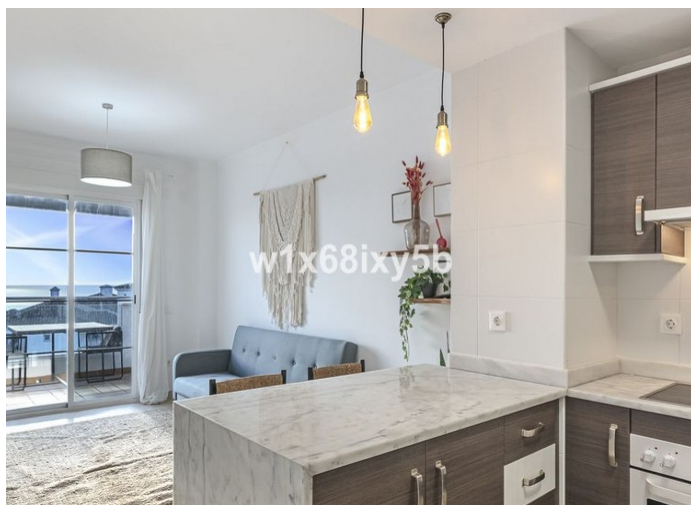
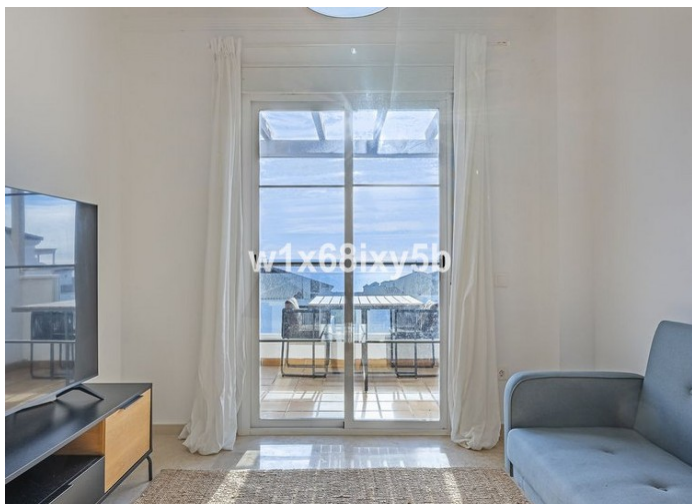
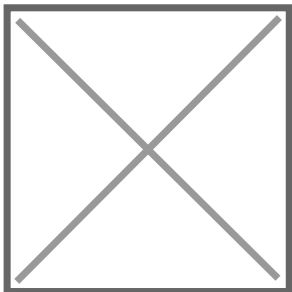
Price: 219,000 €
Ref: R4879882
Bedrooms: 2
Bathrooms: 1
Built size: 68 m²
Plot/Garden: 0 m²
Terrace: 8 m²

Investment opportunity. Apartment in Small Oasis, Manilva

Looking for the ideal place to spend your holidays at an unbeatable price? We present you this contemporary and well located flat in Manilva Costa. Only 10 minutes from the exclusive area of Sotogrande and Gibraltar and one hour from Malaga airport and about 20 minutes from Marbella and Puerto Banus. An opportunity both for use and enjoyment as a second home in this idyllic location in the sun, or as a rental investment with a very good return.

Precio no incluye gastos ni tributos. Gastos adicionales por parte del comprador: Impuesto Sobre Transmisiones (8% hasta 400.000€, 9% de 400.000 a 700.000€ y 10% a partir de 700.000€), Actos Jurídicos Documentados 1,5% sobre el precio de compra, gastos de registro y notaría. Ficha informativa a su disposición en nuestra oficina según Decreto 218/2005 de 11/Oct.

Sale price does not include costs or taxes. Additional costs for the buyer: inscription and notary fees, ITP (8% up to 400.000 euros, 9% from 400.000 to 700.000 euros and 10% from 700.000 euros) or, alternatively 10% VAT and AJD (1.5% on the purchase price) on new properties and subject to some requites to be met. This info is subject to errors, omissions, modifications, prior sale or withdrawal from the marke. Information sheet available, Decree 218/2005 Oct. 11th



Precio no incluye gastos ni tributos. Gastos adicionales por parte del comprador: Impuesto Sobre Transmisiones (8% hasta 400.000€, 9% de 400.000 a 700.000€ y 10% a partir de 700.000€), Actos Jurídicos Documentados 1,5% sobre el precio de compra, gastos de registro y notaría. Ficha informativa a su disposición en nuestra oficina según Decreto 218/2005 de 11/Oct.

Sale price does not include costs or taxes. Additional costs for the buyer: inscription and notary fees, ITP (8% up to 400.000 euros, 9% from 400.000 to 700.000 euros and 10% from 700.000 euros) or, alternatively 10% VAT and AJD (1.5% on the purchase price) on new properties and subject to some requites to be met. This info is subject to errors, omissions, modifications, prior sale or withdrawal from the marke. Information sheet available, Decree 218/2005 Oct. 11th