



Price: 260,000 €
Ref: R4887628
Bedrooms: 3
Bathrooms: 3
Built size: 80 m²
Plot/Garden: 178 m²
Terrace: 30 m²

DETACHED VILLA FOR SALE IN MANILVA

Welcome to this wonderful home in Manilva Pueblo, where serenity meets breathtaking panoramic views. This charming property offers a peaceful and comfortable lifestyle, with thoughtfully designed details to make the most of its natural surroundings.

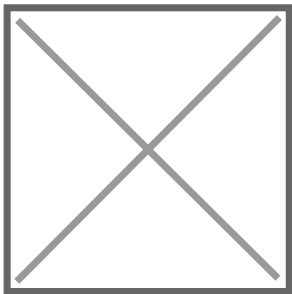
Key Features:

- Location: Manilva Pueblo
- Views: Stunning mountain and sea views
- Barbecue Area: Perfect for outdoor gatherings while enjoying the scenery
- Bedrooms: 3 bedrooms with built-in wardrobes
- Bathrooms: 3 full bathrooms

Kitchen: Fully equipped open-plan kitchen

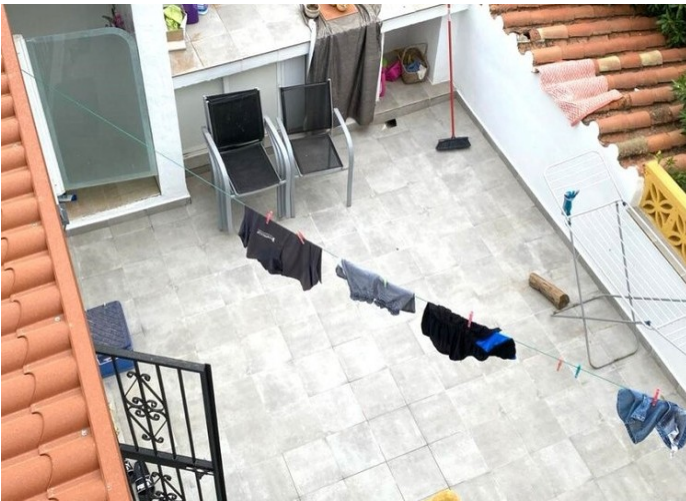
Precio no incluye gastos ni tributos. Gastos adicionales por parte del comprador: Impuesto Sobre Transmisiones (8% hasta 400.000€, 9% de 400.000 a 700.000€ y 10% a partir de 700.000€), Actos Jurídicos Documentados 1,5% sobre el precio de compra, gastos de registro y notaría. Ficha informativa a su disposición en nuestra oficina según Decreto 218/2005 de 11/Oct.

Sale price does not include costs or taxes. Additional costs for the buyer: inscription and notary fees, ITP (8% up to 400.000 euros, 9% from 400.000 to 700.000 euros and 10% from 700.000 euros) or, alternatively 10% VAT and AJD (1.5% on the purchase price) on new properties and subject to some requires to be met. This info is subject to errors, omissions, modifications, prior sale or withdrawal from the market. Information sheet available, Decree 218/2005 Oct. 11th



+ 34 951 69 00 74 + 36 620 249 227

INFO@BAHIAESTATES.COM



Precio no incluye gastos ni tributos. Gastos adicionales por parte del comprador: Impuesto Sobre Transmisiones (8% hasta 400.000€, 9% de 400.000 a 700.000€ y 10% a partir de 700.000€), Actos Jurídicos Documentados 1,5% sobre el precio de compra, gastos de registro y notaría. Ficha informativa a su disposición en nuestra oficina según Decreto 218/2005 de 11/Oct.

Sale price does not include costs or taxes. Additional costs for the buyer: inscription and notary fees, ITP (8% up to 400.000 euros, 9% from 400.000 to 700.000 euros and 10% from 700.000 euros) or, alternatively 10% VAT and AJD (1.5% on the purchase price) on new properties and subject to some requites to be met. This info is subject to errors, omissions, modifications, prior sale or withdrawal from the marke. Information sheet available, Decree 218/2005 Oct. 11th